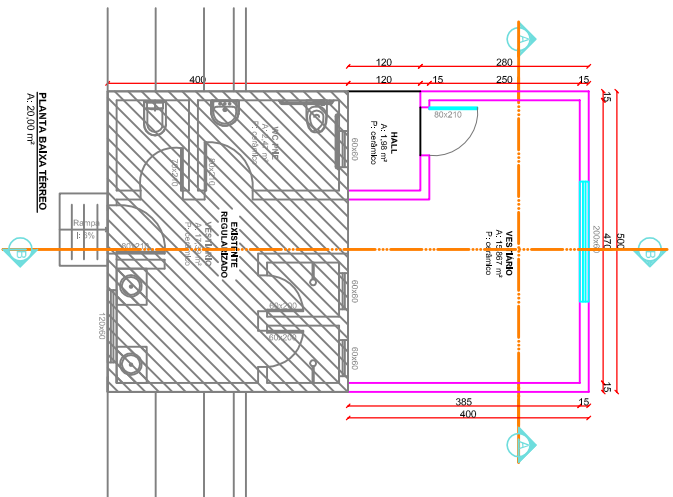


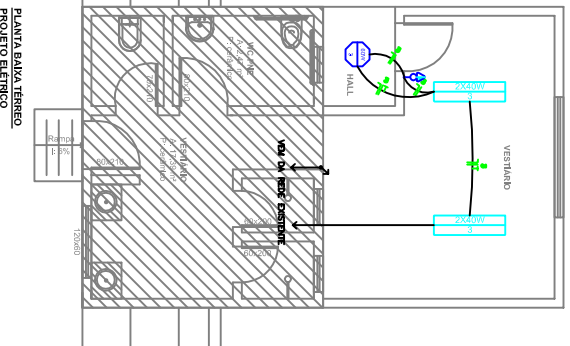
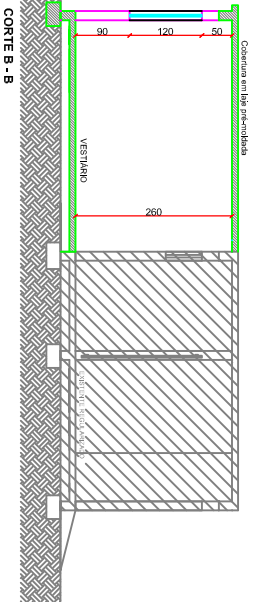
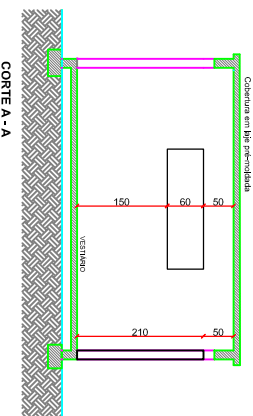
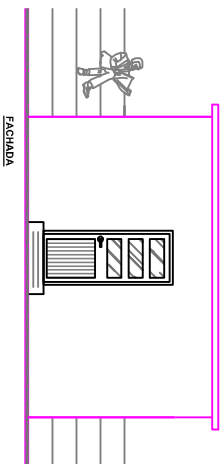
AMPLIAÇÃO VESTIÁRIO 01



PLANTA BAIKA TERREO  
A: 20,00 m²

PLANTILHA ÁREAS VESTIÁRIO 1

PAVIMENTO	EXISTENTE	CONSTRUIR	TOTAL
TERREO	20,00 m²	20,00 m²	40,00 m²
TOTAL	20,00 m²	20,00 m²	40,00 m²














PLANTA BAIKA TERREO  
PROJETO ELÉTRICO

QUADRO DE CARGAS - AMPLIAÇÃO

QCD	QUANTIDADE (Q)	TOMADA(S)/CARGAMENTO(S)	TOTAL (W)	DISTÂNCIA	CORRENTES
1	40	100	4000	5,00	80,0
2	-	-	-	-	2,5
3	03	01	04	20	2,5
TOTAL	03	01	04	40	100

LEGENDA ELÉTRICA

-  CONDUTORES NEUTRO FASE; RETORNO TERRA
-  CANAL DE DISTRIBUIÇÃO
-  INTERRUPTORES TIPO O- HOTEL E SWITCHES
-  INTERRUPTOR+TOMADA MÉDIA (100 W) (h=110 cm)
-  TOMADAS BAIKAS DE 100 W (h=100 cm)
-  TOMADA MÉDIA DE 100 W (h=110 cm)
-  TOMADA ALTA DE 5000 W (h=210 cm)
-  CANAL DE SAÍDA NÚMERO 01; P/ TELEFONE
-  PONTO NET
-  LUMINÁRIAS TIPO SPOT P/ LÂMPADA INCANDESCENTE
-  LUMINÁRIAS TIPO FLUORESCENTE

**Direnge**  
Construções e Projetos Ltda.

Av. XV de Novembro, 66, sala 3017, Fátima S/Nº  
Fone/Fax: 54 3022-1880 - email: direnge@viva.net

IMPLANTAÇÃO DE INFRAESTRUTURA ESPORTIVA

ENDEREÇO: VILA AREIA DE TERREAS URBANAS CONSTITUINDO A QUADRA Nº 19  
TRINTEIRO SUL, 785

RESPONSÁVEL TÉCNICO: MARIETI SLETTE CORCONSKI  
Eng. CREA - CREA NS 83800

PROJETADE: PRESIDENTE MUNICIPAL  
DE ITAUBERA DO SUL

ÁREA LAZER

04/04

DATA: NOVEMBRO  
REVISÃO: QUARTA  
ESCALA: 1:50